




Main Technical Parameters of Wheel Loader Model ZL12F (Automatic Transmission)

| | Item | Parameters |
|----------------------------|--|--|
| Performance | 1. Rated Load | 1200 kg |
| | 2. Operating Weight | 3400 kg |
| | 3. Rated Bucket Capacity | 0.7 m ³ |
| | 4. Bucket Width | 1730 mm |
| | 5. Max. Breakout Force | 36 KN |
| | 6. Max. Tilt Angle of Cabin | 30° |
| | 7. Max. Dumping Height | 2650 mm |
| | 8. Max. Dumping Reach | 1020 mm |
| | 9. Raising Time | ≤ 4.5s |
| | 10. Min. Ground Clearance | 260 mm |
| | 11. Overall Dimensions (L x W x H) | 4800*1730*2650 mm |
| | 12. Min. Turning Radius | 4500 mm |
| Engine | 13. Model | CHANGCHAI 4L68 |
| | 14. Type | Four-cylinder, Inline, Water-cooled, Four-stroke Diesel Engine |
| | 15. Rated Power | 37 kW |
| | 16. Rated Speed | 2200 rpm |
| | 17. Min. Fuel Consumption Ratio | ≤ 230 g/kW·h |
| Transmission System | 18. Hydraulic Torque Converter | YJ240 Integrated Hydraulic Torque Converter |
| | 19. Gear Shift | 1 Forward, 1 Reverse, 1 High Speed, 1 Low Speed |
| | 20. Max. Speed | 25 km/h |
| Drive Axle | 21. Model of Axle | ISUZU Drive Axle |
| | 22. Wheel Tread | 1500 mm |
| | 23. Wheel Base | 2100 mm |
| Drive | 24. Mode | 4-wheel Drive |
| Hydraulic System | 25. System Working Pressure | 16 Mpa |
| | 26. Working Pump Type | Gear Pump |
| Brake System | 27. Service Brake | Foot Pedal Vacuum Assisted Hydraulic, Expansion-shoe Brake on 4 Wheels |
| | 28. Parking Brake | Hand Lever Flexible Shaft Controlled Disc Brake |
| Tyre | 29. Type Specification | 12.00-16-12PR |
| | 30. Front Tyre Pressure | 0.40 Mpa |
| | 31. Rear Tyre Pressure | 0.35 Mpa |
| Photo |  | |

Standard Configuration:



Enclosed Cabin



Enclosed Cabin (Newly Designed)



Digital Radio + MP3 Player



Electric Fan



Heater



Adjustable Suspension Seat



Emergency Hammer



Fire Extinguisher



Rotating Beacon



Mechanical Joystick



**Mechanical Gear Shift Lever
(Automatic Transmission)**

Note:

- 1. The technical specifications are for standard models only.**
- 2. Other optional accessories and requirements are available upon request.**
- 3. All photos are for reference only. Machines shown may include optional parts.**
- 4. All specifications and design characteristics are subject to change without prior notice.**
- 5. For all available loader attachments, please refer to our Loader Attachments Catalogue.**

Optionally Parts and Functions:



Canopy



Open Cabin



FOPS/ROPS



Tilting Cabin (up to 30° for Easy Maintenance)



Hydraulic Joystick Control + Quick Hitch Lever + Armrest



Air Conditioner (Some Models Only)



Color Coded Electronic Gear Shift Button on Joystick



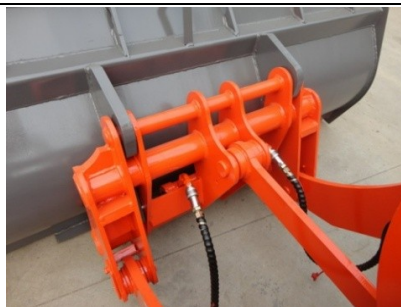
Gear Shift Lever with Electronic Control



Headlight Cover



Reversing Camera



Standard Quick Coupler/Quick Hitch /Quick Attach



Skid Steer (Bobcat) Quick Coupler/Quick Attach/Quick Hitch



Euro Standard Quick Coupler



Number Plate

Note:
Equipped with hydraulic quick coupler, your wheel loader can be easily and conveniently switched from one attachment to another to save your time and labor. Equipped with skid steer (Bobcat) quick coupler or Euro Standard quick coupler, you can use all your existing attachments with our wheel loader.