





TAGLIA RAMI
HEDGE TRIMMER • TAILLE HAIE • HECKENSCHERE



GHEDINI
ATTACHMENTS

BT Taglia rami

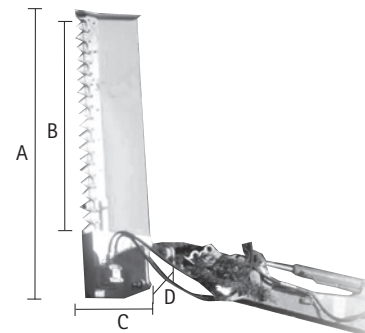
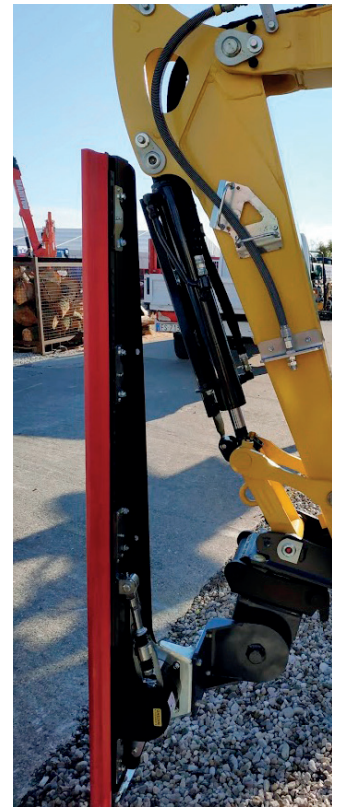


-  Senza drenaggio esterno. Taglia fino a 4 cm di diametro. Giunto di Hirth (VC 14) e sella di attacco su misura.
-  Without external drain. It cuts branches up to 4 cm diameter. Hirth coupling (VC 14) and customized bracket.
-  Pas de drainage. Il coupe jusqu'à 4 cm de diameter. Accouplement Hirth (VC 14) et platine sur mesure.
-  Keine dritte Rohrleitung. Man kann max. Durchmesser von 4 cm schneiden. Hirth-Kupplung (VC 14) und maßgeschneiderte Aufnahme.



PARTICOLARI TAGLIARAMI DI SERIE

FEATURES STANDARD HEDGE TRIMMER • CHARACTERISTIQUES TAILLE HAIE STANDARD • EIGENSCHAFTEN STANDARD HECKENSCHERE



	A	B	C	D
BT 50	1270	1200	300	50
BT 51	1270	1200	300	50
BT 52	1270	1200	300	50
BT 53	1270	1200	300	50
BT 54	1670	1600	300	50
BT 55	1670	1600	300	50
BT 56	1670	1600	300	50
BT 57	1870	1800	300	50
BT 58	1870	1800	300	50
BT 59	1870	1800	300	50
BT 16	1950	1475	460	165

CARATTERISTICHE TECNICHE • TECHNICAL DETAILS • DONNEES TECHNIQUES • TECHNISCHE EIGENSCHAFTEN

Modello - Model - Modèle - Modell		BT 50	BT 51	BT 52	BT 53	BT 54	BT 55	BT 56	BT 57	BT 58	BT 59	BT 16
Max Portata d'olio - Max Oil flow Débit maxi - Max Öldurchfluss	l/min	19	26	40	50	26	40	50	26	40	50	55/80
Max Pressione - Max Pressure Pression maxi - Max Druck	bar	180	180	180	180	180	180	180	180	180	180	180
Peso - Weight - Poids - Gewicht	kg	42	42	42	42	55	55	55	64	64	64	100
Larghezza di lavoro - Working width Largeur de travail - Schnittbreite	mm	1200	1200	1200	1200	1600	1600	1600	1800	1800	1800	1500
Peso indicativo escavatore - Excavator weight Poids de la pelle - Gewicht des Baggers	ton	0,7 - 1,2	1,3 - 2,5	2,6 - 4	4 - 5	2 - 2,5	2,6 - 4	4 - 5	2 - 2,5	2,6 - 4	4 - 5	4 - 10
Diametro di taglio max - Max cutting diameter Diamètre maxi de coupe - Max Schnittdurchmesser	cm	2 - 3	2 - 3	2 - 3	2 - 3	2 - 3	2 - 3	2 - 3	2 - 3	2 - 3	2 - 3	3 - 4